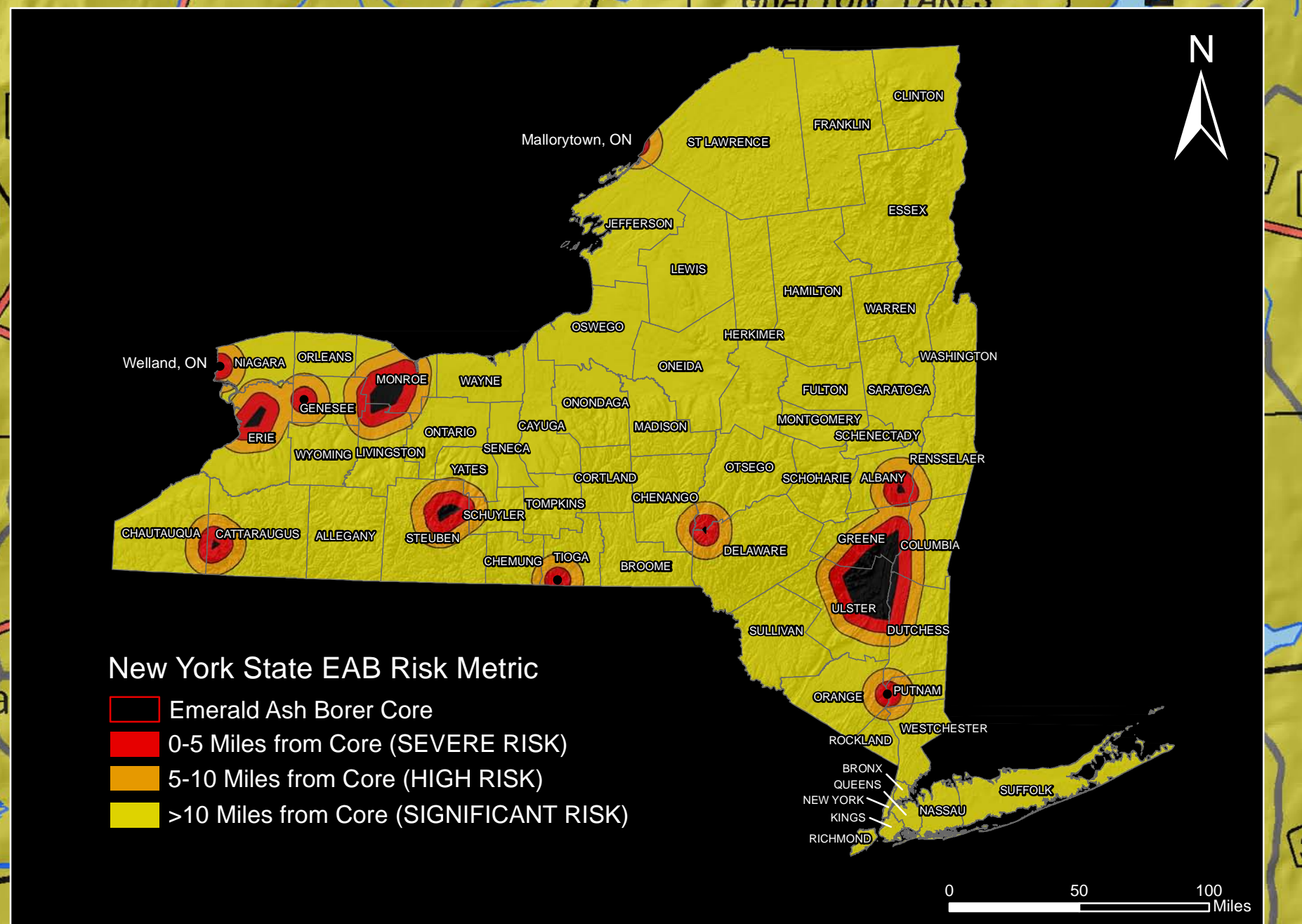
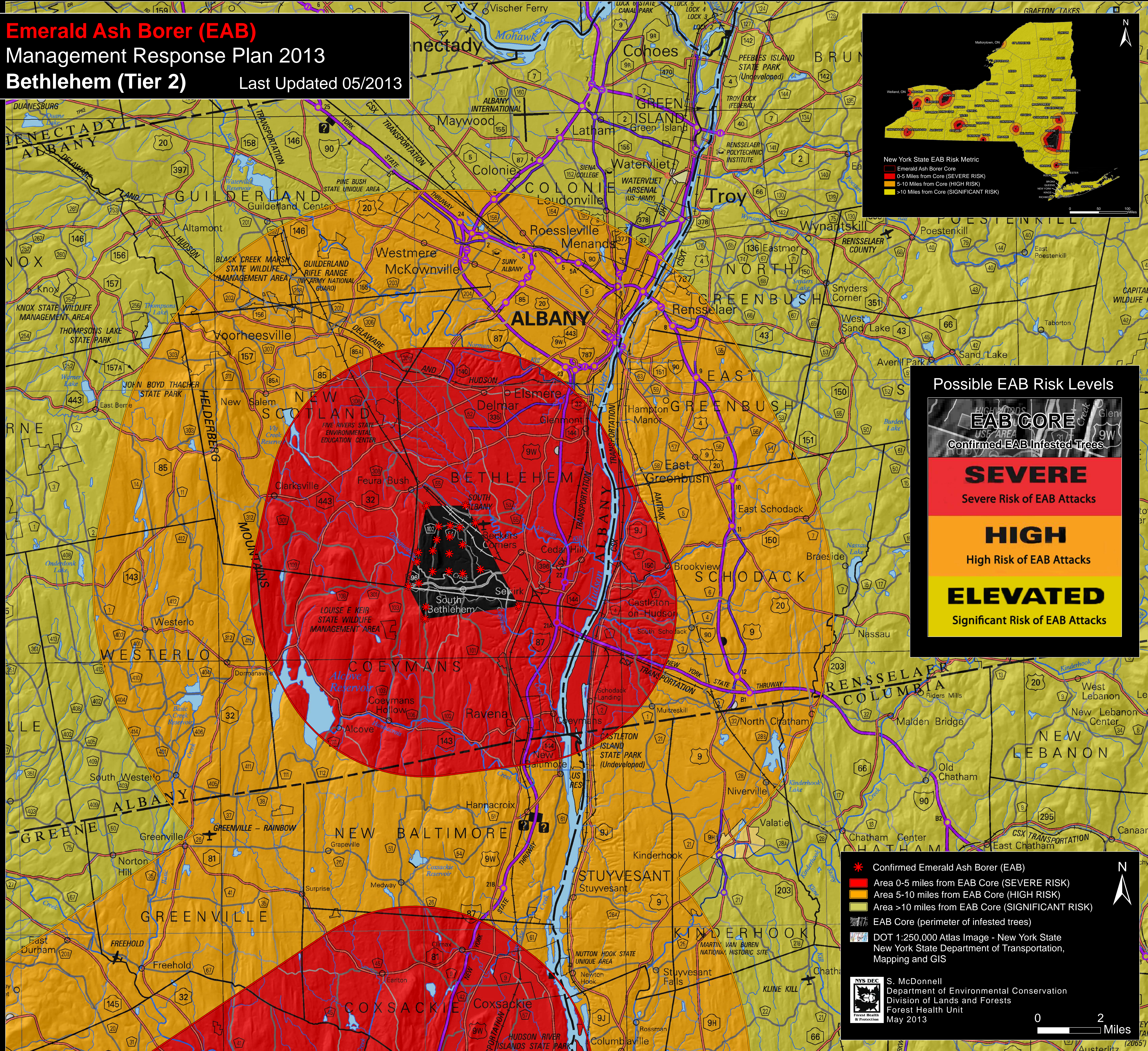


Emerald Ash Borer (EAB)
Management Response Plan 2013
Bethlehem (Tier 2) Last Updated 05/2013

E m e r a l d A s h B o r e r R I S K



Possible EAB Risk Levels

EAB CORE
Confirmed EAB Infested Trees

SEVERE
Severe Risk of EAB Attacks

HIGH
High Risk of EAB Attacks

ELEVATED
Significant Risk of EAB Attacks

- * Confirmed Emerald Ash Borer (EAB)
- Area 0-5 miles from EAB Core (SEVERE RISK)
- Area 5-10 miles from EAB Core (HIGH RISK)
- Area >10 miles from EAB Core (SIGNIFICANT RISK)
- EAB Core (perimeter of infested trees)
- DOT 1:250,000 Atlas Image - New York State
New York State Department of Transportation,
Mapping and GIS

S. McDonnell
 Department of Environmental Conservation
 Division of Lands and Forests
 Forest Health Unit
 May 2013

0 2 Miles